

WILLOUGHBY PLAT NO. 3

BEING A TRACT OF LAND LYING IN THE HANSON GRANT SITUATED IN MARTIN COUNTY, FLORIDA.

I, MARSHA STILLER, CLERK OF THE CIRCUIT COURT OF MARTIN COUNTY, FLORIDA, HEREBY CERTIFY THAT THIS PLAT WAS FILED FOR RECORD IN PLAT BOOK 11, PAGE 73, MARTIN COUNTY, FLORIDA, PUBLIC RECORDS, THIS DAY OF _____, 1988.

MARSHA STILLER, CLERK
CIRCUIT COURT
MARTIN COUNTY, FLORIDA

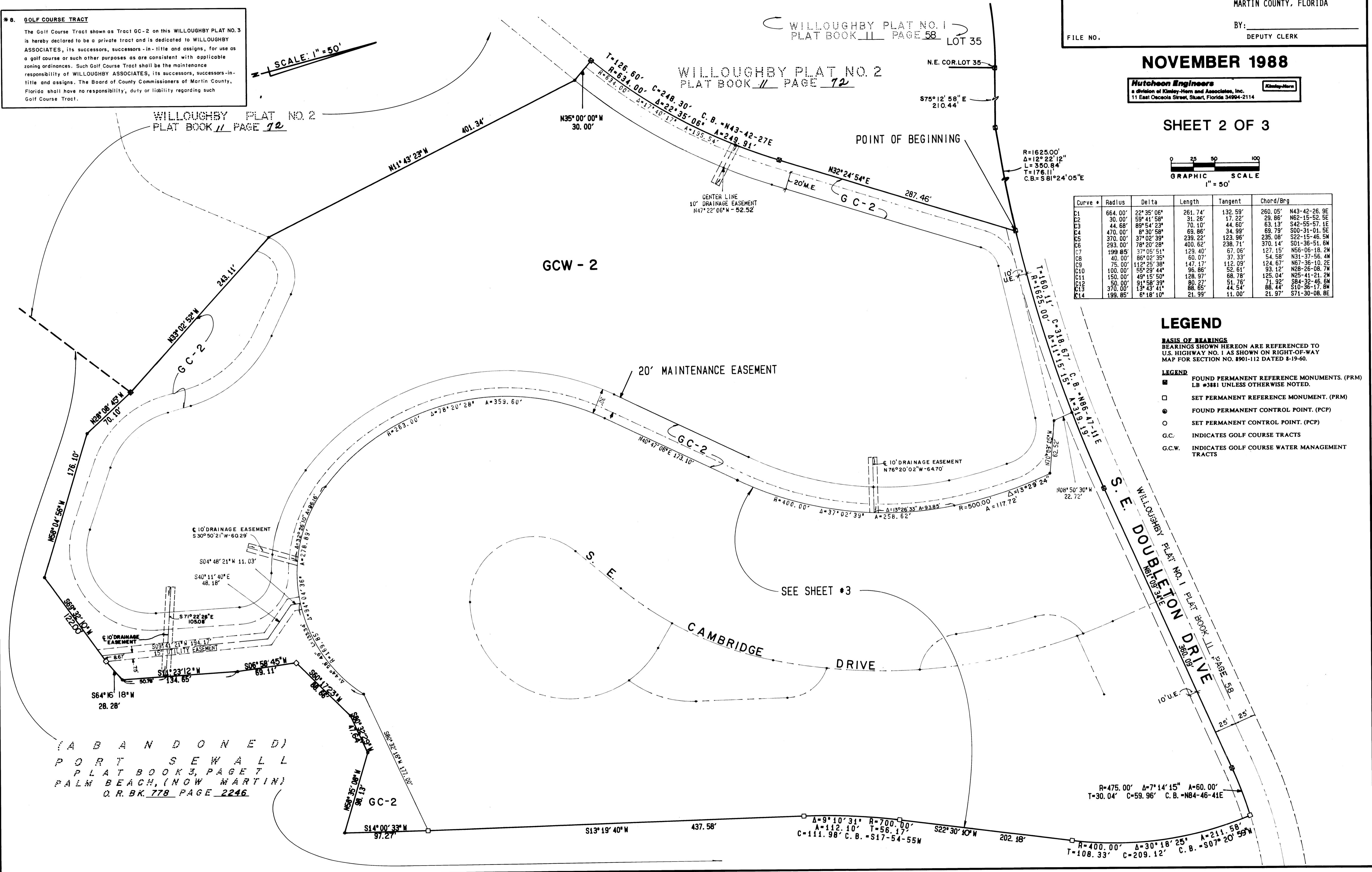
BY: _____
DEPUTY CLERK

FILE NO. _____

*** 8. GOLF COURSE TRACT**

The Golf Course Tract shown as Tract GC-2 on this WILLOUGHBY PLAT NO. 3 is hereby declared to be a private tract and is dedicated to WILLOUGHBY ASSOCIATES, its successors, successors-in-title and assigns, for use as a golf course or such other purposes as are consistent with applicable zoning ordinances. Such Golf Course Tract shall be the maintenance responsibility of WILLOUGHBY ASSOCIATES, its successors, successors-in-title and assigns. The Board of County Commissioners of Martin County, Florida shall have no responsibility, duty or liability regarding such Golf Course Tract.

SCALE: 1" = 50'



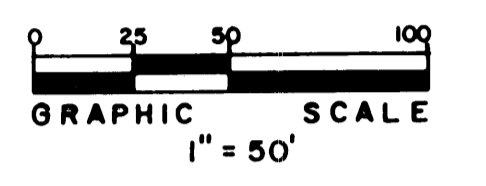
WILLOUGHBY PLAT NO. 1
PLAT BOOK 11 PAGE 58 LOT 35

WILLOUGHBY PLAT NO. 2
PLAT BOOK 11 PAGE 72

NOVEMBER 1988

Hutcheon Engineers
a division of Kinley-Horn and Associates, Inc.
11 East Ocoosa Street, Stuart, Florida 34984-2114

SHEET 2 OF 3



Curve #	Radius	Delta	Length	Tangent	Chord/Brg
C1	664.00'	22° 35' 06"	261.74'	132.59'	260.05' N43-42-26.9E
C2	30.00'	59° 41' 58"	31.26'	17.22'	29.86' N62-15-52.5E
C3	44.68'	89° 54' 23"	70.10'	44.60'	63.13' S42-55-57.1E
C4	470.00'	8° 30' 58"	69.86'	34.99'	69.79' S00-31-01.5E
C5	370.00'	37° 02' 39"	239.22'	123.96'	235.08' S22-15-46.5W
C6	293.00'	78° 20' 28"	400.62'	236.71'	370.14' S01-36-51.6W
C7	199.85'	37° 05' 51"	129.40'	67.06'	127.15' N56-06-18.2W
C8	40.00'	86° 02' 35"	60.07'	37.33'	54.58' N31-37-56.4W
C9	75.00'	112° 25' 38"	147.17'	112.09'	124.67' N67-36-10.2E
C10	100.00'	55° 29' 44"	96.86'	52.61'	93.12' N28-26-08.7W
C11	150.00'	49° 15' 50"	128.97'	68.78'	125.04' N25-41-21.2W
C12	50.00'	91° 58' 39"	80.97'	51.76'	71.92' S84-32-46.6W
C13	370.00'	13° 43' 41"	88.65'	44.54'	88.44' S10-36-17.8W
C14	199.85'	6° 18' 10"	21.99'	11.00'	21.97' S71-30-08.8E

LEGEND

- BASIS OF BEARINGS**
BEARINGS SHOWN HEREON ARE REFERENCED TO U.S. HIGHWAY NO. 1 AS SHOWN ON RIGHT-OF-WAY MAP FOR SECTION NO. 8901-112 DATED 8-19-60.
- LEGEND**
- FOUND PERMANENT REFERENCE MONUMENTS. (PRM)
LB #3881 UNLESS OTHERWISE NOTED.
 - SET PERMANENT REFERENCE MONUMENT. (PRM)
 - FOUND PERMANENT CONTROL POINT. (PCP)
 - SET PERMANENT CONTROL POINT. (PCP)
 - G.C. INDICATES GOLF COURSE TRACTS
 - G.C.W. INDICATES GOLF COURSE WATER MANAGEMENT TRACTS

(ABANDONED)
PORT SEWALL
PLAT BOOK 3, PAGE 7
PALM BEACH, (NOW MARTIN)
O.R. BK. 778 PAGE 2246

SEE SHEET #3

S.E. DOUBLETON DRIVE